

Lenton

24 COLOURS / 1 SIZE / 3 FINISHES

Variations in colour and patterning create interplays of light which add vibrancy to spaces. Brick tile Lenton introduces a collection with a decidedly contemporary appeal and an ultra-glossy surface in both plain and décor tiles.



Lenton



Lenton



Lenton



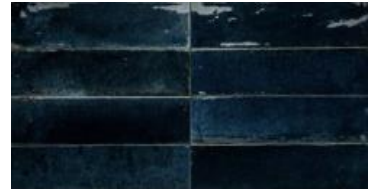
LIQUORICE



BRONZE



FOREST GREEN



INK BLUE



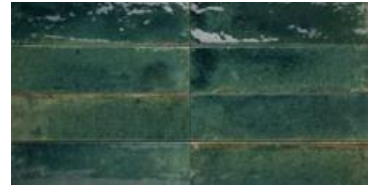
OCHRE



ANTIQUE WHITE



BLUE



GREEN



GREIGE



MUSK



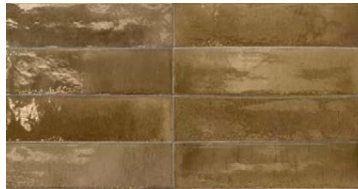
WHITE



OFF-WHITE



PINK



BEIGE



TURQUOISE



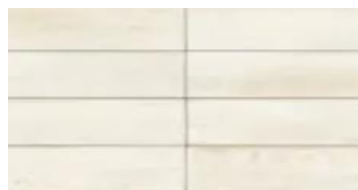
WOODLAND



CHINA BLUE



TAUPE



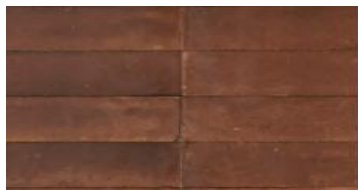
LINO



TURCHESE



VERDE



CARAMEL



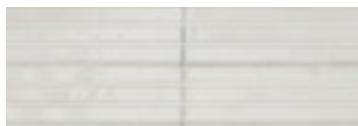
OCEAN



EMERALD



AVIO STRUT 3D YUBI



BIANCO STRUT 3D YUBI



BLUE STRUT 3D YUBI



LINO STRUT 3D YUBI



OLIVA STRUT 3D YUBI



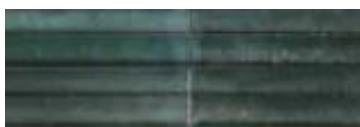
VERDE STRUT 3D YUBI



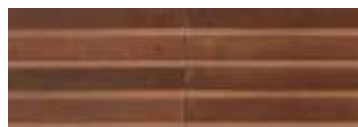
TURCHESE STRUT 3D YUBI



BLUE 3D RAKE



BLUE 3D SWING



CARAMEL 3D RAKE



CARAMEL 3D SWING



EMERALD 3D RAKE

Lenton



EMERALD 3D SWING



GREEN 3D RAKE



GREEN 3D SWING



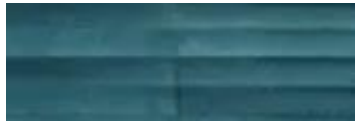
GREIGE 3D RAKE



GREIGE 3D SWING



OCEAN 3D RAKE



OCEAN 3D SWING



OFF-WHITE 3D RAKE



OFF-WHITE 3D SWING



TURQUOISE 3D RAKE



TURQUOISE 3D SWING



WHITE 3D RAKE



WHITE 3D SWING



Lenton



60x240

Porcelain 60x240x10	Gloss	Wall & Floor	Interior & Exterior
---------------------	-------	--------------	---------------------

GROUP / BLA - PORCELAIN

	Standard	Requirement	Established Values
Length and Width	ISO 10545-2	±0.6% ~ ±2mm	Conforms
Thickness	ISO 10545-2	±5% ~ ±0.5mm	Conforms
Straightness	ISO 10545-2	±0.5% ~ ±1.5mm	Conforms
Flatness	ISO 10545-2	±0.5% ~ ±2.0mm	Conforms
Rectangularity	ISO 10545-2	±0.5% ~ ±2.0mm	Conforms
Water Absorption	ISO 10545-3	$E_w \leq 0.5\%$	$\leq 0.5\%$
Breaking Strength	ISO 10545-4	$\geq 1300N$	$\geq 1300N$
Modulus of Rupture	ISO 10545-4	Ave Minimum 35 N/mm ²	35 N/mm ²
Thermal Shock Resistance	ISO 10545-9	Pass according to EN ISO 10545-1	Resistant
Frost Resistance	ISO 10545-12	Pass according to EN ISO 10545-1	Resistant
Resistance to household chemicals and swimming pool salts	ISO 10545-13	Min Class GB	GA
Resistance to high concentrations of alkalis and acids	ISO 10545-13	Declare Value	GHB
Resistance to low concentrations of alkalis and acids	ISO 10545-13	Declare Value	GLB
Resistance to Stain	ISO 10545-14	Declare Value	Class 5
Reaction to Fire		Class A1 A1/FL	Class A1

Recycled Content	10 %
Range Name	Lenton

The colour representations shown in this data sheet are as accurate as the limitations of the printing process will allow. Due to the manufacturing process of our floor tiles there may be a small variation in the PTV value. The slip resistance values are correct at the time of testing and represent the standard production value. Inadequate cleaning and maintenance will lead to significant reduction in the slip resistance of any tiles. The pendulum test results have been displayed in line with H&S Executive guidelines whereby 0-24 represents high slip potential, 25-35 moderate slip potential & 36+ represents a low slip potential.

For further information contact: T: 0116 276 2532 – W: www.parkside.co.uk – E: info@parkside.co.uk

Strata Technical Tiles is the partner brand of Parkside Architectural Tiles