

# Contrax

5 COLOURS / 4 SIZES / 1 FINISH

Contrax is a go-to range which ticks all the boxes for commercial environments. 5 colours, 4 sizes, a subtle design and a PTV+36 finish make this range suitable for any space. The 33x33cm is non-rectified, the other sizes are rectified.



Contrax



# Contrax



NATURAL



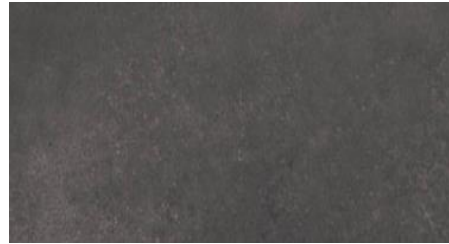
BEIGE



LIGHT GREY



GREY



ANTRACHITE

| Porcelain | 8.5mm thick | Wall/floor   | Interior/exterior   |
|-----------|-------------|--------------|---------------------|
|           | Matt        | All tiles    | All tiles           |
| 330x330   | ✓           | Wall & Floor | Interior & Exterior |
| 300x600   | ✓           | Wall & Floor | Interior & Exterior |
| 600x600   | ✓           | Wall & Floor | Interior & Exterior |
| 600x1200  | ✓           | Wall & Floor | Interior & Exterior |

The colour representations shown in this data sheet are as accurate as the limitations of the printing process will allow. Due to the manufacturing process of our floor tiles there may be a small variation in the PTV value. The slip resistance values are correct at the time of testing and represent the standard production value. Inadequate cleaning and maintenance will lead to significant reduction in the slip resistance of any tiles. The pendulum test results have been displayed in line with H&S Executive guidelines whereby 0-24 represents high slip potential, 25-35 moderate slip potential & 36+ represents a low slip potential.

For further information contact: T: 0116 276 2532 – W: [www.parkside.co.uk](http://www.parkside.co.uk) – E: [info@parkside.co.uk](mailto:info@parkside.co.uk)

Strata Technical Tiles is the partner brand of Parkside Architectural Tiles



# Contrax 30x60 rectified

## GROUP / BLA - PORCELAIN

|   | Standard     | Requirement                      | Established Values   |
|---|--------------|----------------------------------|--|
| Length and Width  | ISO 10545-2  | ±0.6% ~ ±2mm                     | Conforms   |
| Thickness   | ISO 10545-2  | ±5% ~ ±0.5mm                     | Conforms   |
| Straightness  | ISO 10545-2  | ±0.5% ~ ±1.5mm                   | Conforms   |
| Flatness  | ISO 10545-2  | ±0.5% ~ ±2.0mm                   | Conforms   |
| Rectangularity  | ISO 10545-2  | ±0.5% ~ ±2.0mm                   | Conforms   |
| Water Absorption  | ISO 10545-3  | $E_w \leq 0.5\%$                 | $\leq 0.5\%$   |
| Breaking Strength   | ISO 10545-4  | $\geq 1300N$                     | 2200N  |
| Modulus of Rupture  | ISO 10545-4  | Ave Minimum 35 N/mm <sup>2</sup> | 52 N/mm <sup>2</sup>   |
| Resistance to deep abrasion (glazed tiles)                | ISO 10545-7  | Declare Value                    | 6179 – PEI 4<br>6180 – PEI 4<br>6181 – PEI 4<br>6182 – PEI 3<br>6278 – PEI 2 |
| Thermal Shock Resistance                                  | ISO 10545-9  | Pass according to EN ISO 10545-1 | Pass   |
| Frost Resistance  | ISO 10545-12 | Pass according to EN ISO 10545-1 | Pass   |
| Resistance to household chemicals and swimming pool salts | ISO 10545-13 | Min Class GB                     | GA   |
| Resistance to high concentrations of alkalis and acids    | ISO 10545-13 | Declare Value                    | GHA  |
| Resistance to low concentrations of alkalis and acids     | ISO 10545-13 | Declare Value                    | GLA  |
| Resistance to Stain                                       | ISO 10545-14 | Declare Value                    | Class 5  |
| Reaction to Fire  |              | Class A1 A1/FL                   | Class A1/FL  |

| Slip Resistance Characteristics | Pendulum Dry (4S Slider 96) +36 | Pendulum Wet (4S Slider 96) +36 |
|---------------------------------|---------------------------------|---------------------------------|
| Full Range                      | ✓                               | ✓                               |

|                  |         |
|------------------|---------|
| Recycled Content | 0 %     |
| Range Name       | Contrax |

The colour representations shown in this data sheet are as accurate as the limitations of the printing process will allow. Due to the manufacturing process of our floor tiles there may be a small variation in the PTV value. The slip resistance values are correct at the time of testing and represent the standard production value. Inadequate cleaning and maintenance will lead to significant reduction in the slip resistance of any tiles. The pendulum test results have been displayed in line with H&S Executive guidelines whereby 0-24 represents high slip potential, 25-35 moderate slip potential & 36+ represents a low slip potential.

For further information contact: T: 0116 276 2532 – W: [www.parkside.co.uk](http://www.parkside.co.uk) – E: [info@parkside.co.uk](mailto:info@parkside.co.uk)

Strata Technical Tiles is the partner brand of Parkside Architectural Tiles

# Contrax 33x33 Pressed

GROUP / BLA - PORCELAIN

|   | Standard     | Requirement                      | Established Values   |
|---|--------------|----------------------------------|--|
| Length and Width  | ISO 10545-2  | ±0.6% ~ ±2mm                     | Conforms   |
| Thickness   | ISO 10545-2  | ±5% ~ ±0.5mm                     | Conforms   |
| Straightness  | ISO 10545-2  | ±0.5% ~ ±1.5mm                   | Conforms   |
| Flatness  | ISO 10545-2  | ±0.5% ~ ±2.0mm                   | Conforms   |
| Rectangularity  | ISO 10545-2  | ±0.5% ~ ±2.0mm                   | Conforms   |
| Water Absorption  | ISO 10545-3  | $E_w \leq 0.5\%$                 | $\leq 0.5\%$   |
| Breaking Strength   | ISO 10545-4  | $\geq 1300N$                     | 1347N  |
| Modulus of Rupture  | ISO 10545-4  | Ave Minimum 35 N/mm <sup>2</sup> | 61 N/mm <sup>2</sup>   |
| Resistance to deep abrasion (glazed tiles)                | ISO 10545-7  | Declare Value                    | 6555 – PEI 3<br>6556 – PEI 3<br>6557 – PEI 3<br>6558 – PEI 2 |
| Thermal Shock Resistance                                  | ISO 10545-9  | Pass according to EN ISO 10545-1 | Pass   |
| Frost Resistance  | ISO 10545-12 | Pass according to EN ISO 10545-1 | Pass   |
| Resistance to household chemicals and swimming pool salts | ISO 10545-13 | Min Class GB                     | GA   |
| Resistance to high concentrations of alkalis and acids    | ISO 10545-13 | Declare Value                    | GHA  |
| Resistance to low concentrations of alkalis and acids     | ISO 10545-13 | Declare Value                    | GLA  |
| Resistance to Stain                                       | ISO 10545-14 | Declare Value                    | Class 5  |
| Reaction to Fire  |              | Class A1 A1/FL                   | Class A1/FL  |

| Slip Resistance Characteristics | Pendulum Dry<br>(4S Slider 96)<br>+36 | Pendulum Wet<br>(4S Slider 96)<br>+36 |
|---------------------------------|---------------------------------------|---------------------------------------|
| Full Range                      | ✓                                     | ✓                                     |

|                  |         |
|------------------|---------|
| Recycled Content | 0 %     |
| Range Name       | Contrax |

The colour representations shown in this data sheet are as accurate as the limitations of the printing process will allow. Due to the manufacturing process of our floor tiles there may be a small variation in the PTV value. The slip resistance values are correct at the time of testing and represent the standard production value. Inadequate cleaning and maintenance will lead to significant reduction in the slip resistance of any tiles. The pendulum test results have been displayed in line with H&S Executive guidelines whereby 0-24 represents high slip potential, 25-35 moderate slip potential & 36+ represents a low slip potential.

For further information contact: T: 0116 276 2532 – W: [www.parkside.co.uk](http://www.parkside.co.uk) – E: [info@parkside.co.uk](mailto:info@parkside.co.uk)

Strata Technical Tiles is the partner brand of Parkside Architectural Tiles