

Shibi

8 COLOURS / 1 SIZE / 1 FINISH

Inspired by the beauty of Japan's famous cherry blossom season, this rippled fluted tile provides a sophisticated yet fun finish in an elongated design and high gloss finish.



Shibi



Shibi



Shibi



WHITE



SMOKE GREY



IRON GREY



LIGHT GREY



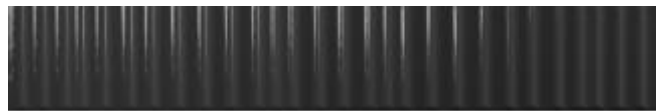
PINK



FERN



OCEAN



BLACK

715498	6.8mm thick	Wall/floor	Interior/exterior
	Gloss	All tiles	All tiles
50x300	✓	Wall Only	Interior Only



The colour representations shown in this data sheet are as accurate as the limitations of the printing process will allow. Due to the manufacturing process of our floor tiles there may be a small variation in the PTV value. The slip resistance values are correct at the time of testing and represent the standard production value. Inadequate cleaning and maintenance will lead to significant reduction in the slip resistance of any tiles. The pendulum test results have been displayed in line with H&S Executive guidelines whereby 0-24 represents high slip potential, 25-35 moderate slip potential & 36+ represents a low slip potential.

For further information contact: T: 0116 276 2532 – W: www.parkside.co.uk – E: info@parkside.co.uk

Strata Technical Tiles is the partner brand of Parkside Architectural Tiles

Shibi

GROUP / BIII - CERAMIC

	Standard	Requirement	Established Values
Length and Width	ISO 10545-2	±0.5% ~ ±2mm	Conforms
Thickness	ISO 10545-2	±5% ~ ±0.5mm	Conforms
Straightness	ISO 10545-2	±0.5% ~ ±1.5mm	Conforms
Flatness	ISO 10545-2	±0.5% ~ ±2.0mm	Conforms
Rectangularity	ISO 10545-2	±0.5% ~ ±2.0mm	Conforms
Water Absorption	ISO 10545-3	Eb >10%	15 %
Breaking Strength	ISO 10545-4	≥ 600N	≥ 600N
Modulus of Rupture	ISO 10545-4	Ave Minimum 12 N/mm ²	>23 N/mm ²
Thermal Shock Resistance	ISO 10545-9	Pass according to EN ISO 10545-1	Resistant
Resistance to household chemicals and swimming pool salts	ISO 10545-13	Min Class GB	GA
Resistance to high concentrations of alkalis and acids	ISO 10545-13	Declare Value	GHA
Resistance to low concentrations of alkalis and acids	ISO 10545-13	Declare Value	GLA
Resistance to Stain	ISO 10545-14	Min Class 3	Class 5
Reaction to Fire		Class A1 A1/FL	Class A1

Recycled Content	0 %
Range Name	Shibi

The colour representations shown in this data sheet are as accurate as the limitations of the printing process will allow. Due to the manufacturing process of our floor tiles there may be a small variation in the PTV value. The slip resistance values are correct at the time of testing and represent the standard production value. Inadequate cleaning and maintenance will lead to significant reduction in the slip resistance of any tiles. The pendulum test results have been displayed in line with H&S Executive guidelines whereby 0-24 represents high slip potential, 25-35 moderate slip potential & 36+ represents a low slip potential.

For further information contact: T: 0116 276 2532 – W: www.parkside.co.uk – E: info@parkside.co.uk

Strata Technical Tiles is the partner brand of Parkside Architectural Tiles