



# REGAL COLLECTION

## Versatile Neutrals

Porcelain tiles and detailing

9 COLOURS / 5 SIZES / 3 FINISHES / **VARIOUS** SPECIAL PIECES

The colours are neutral. The impact is anything but.

The Regal Collection is designed for exceptional performance, in a subtle palette of neutral tones and different surface effects, accompanied by co-ordinating trims, thresholds and grouts. The palette and finishes give you the potential to create stunning, yet seemingly effortless design schemes.

Available in matt, polished and grip finishes, Regal offers a complete range of solutions for the demanding requirements of modern architecture, being the ideal solution both for wall and floor coverings in residential and public spaces.





# REGAL COLLECTION

Versatile Neutrals

Porcelain tiles and detailing





# REGAL COLLECTION

## Versatile Neutrals

Porcelain tiles and detailing

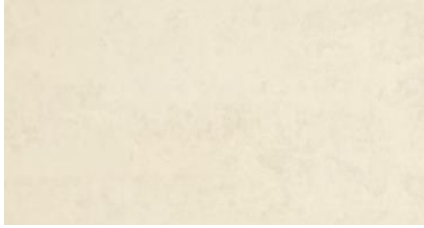




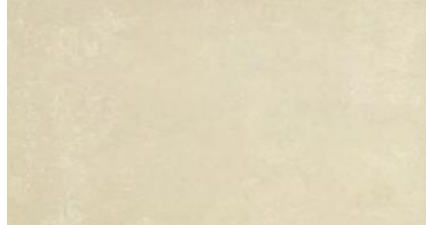
# REGAL COLLECTION

## Versatile Neutrals

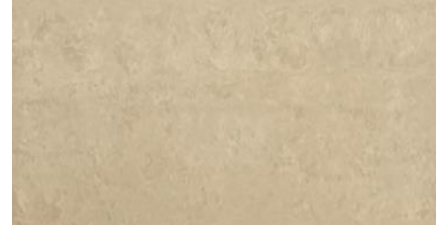
Porcelain tiles and detailing



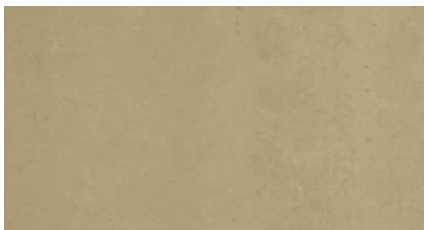
Vanilla



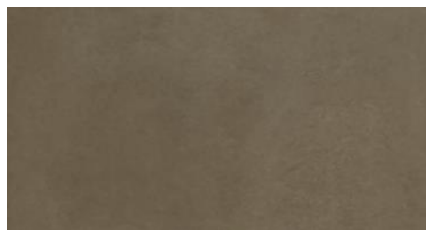
White



Cream



Beige



Dove



Grey



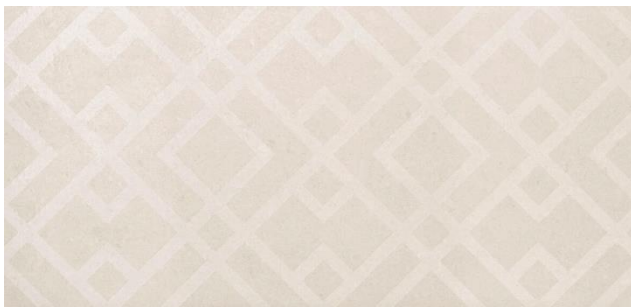
Dark Grey



Ash



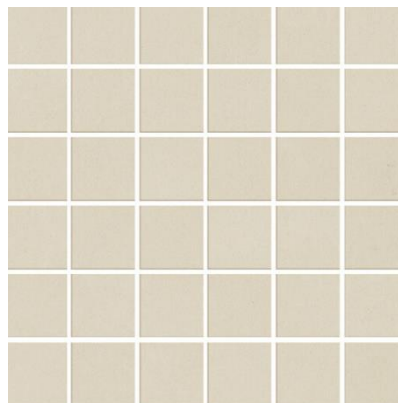
Black



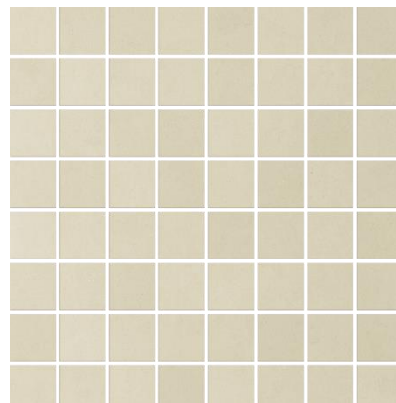
Etched Geo



Etched Orbital



5x5cm chip mosaics



3.5x3.5cm chip mosaics



# REGAL COLLECTION

Versatile Neutrals

Porcelain tiles and detailing

			299x 600	600x 600	895x 895	600x 1200	500x 1000	1000x 1000	1000x 3000	Geo 299x 600	Orbital 299x 600	35x35 mosaic	50x50 mosaic	Matching Detailing
FOR WALLS & FLOORS			W&F	W&F	W&F	W&F	W&F	W&F	W&F	W	W	W&F	W&F	
FINISH	SIZE	PTV ≥36												
VANILLA	POLISHED	10.5mm	◆*	◆*	◆*	◆				◆*	◆*	◆	◆*	◆
	MATT	10mm	◆*	◆*	◆*	◆						◆	◆*	
	MATT	3.5mm	⊕				◆	◆	◆					
	MATT	14mm	⊕		◆									
	GRIP	10mm	⊕	◆	◆							◆		
WHITE	POLISHED	10.5mm	◆	◆		◆						◆		
	MATT	10mm	⊕	◆		◆						◆		
	MATT	3.5mm	⊕											
	MATT	14mm	⊕											
	GRIP	10mm	⊕									◆		
CREAM	POLISHED	10.5mm	◆	◆	◆	◆						◆		
	MATT	10mm	⊕	◆	◆	◆						◆		
	MATT	3.5mm	⊕				◆	◆	◆					
	MATT	14mm	⊕		◆									
	GRIP	10mm	⊕	◆	◆							◆		
BEIGE	POLISHED	10.5mm	◆	◆	◆							◆		
	MATT	10mm	⊕	◆	◆							◆		
	MATT	3.5mm	⊕				◆	◆	◆					
	MATT	14mm	⊕											
	GRIP	10mm	⊕	◆	◆							◆		
GREY	POLISHED	10.5mm	◆*	◆*	◆*	◆				◆*	◆*	◆	◆*	◆
	MATT	10mm	⊕	◆*	◆*	◆						◆	◆*	
	MATT	3.5mm	⊕				◆	◆	◆					
	MATT	14mm	⊕		◆									
	GRIP	10mm	⊕											
DARK GREY	POLISHED	10.5mm	◆	◆		◆						◆		
	MATT	10mm	⊕	◆	◆	◆						◆		
	MATT	3.5mm	⊕											
	MATT	14mm	⊕											
	GRIP	10mm	⊕	◆								◆		
DOVE	POLISHED	10.5mm	◆	◆								◆		
	MATT	10mm	⊕	◆	◆							◆		
	MATT	3.5mm	⊕											
	MATT	14mm	⊕											
	GRIP	10mm	⊕									◆		
ASH	POLISHED	10.5mm	◆*	◆*	◆*					◆*	◆*	◆	◆*	◆
	MATT	10mm	⊕	◆*	◆*							◆	◆*	
	MATT	3.5mm	⊕				◆	◆	◆					
	MATT	14mm	⊕											
	GRIP	10mm	⊕	◆	◆							◆		
BLACK	POLISHED	10.5mm	◆	◆	◆	◆						◆		
	MATT	10mm	⊕	◆	◆	◆						◆		
	MATT	3.5mm	⊕				◆	◆	◆					
	MATT	14mm	⊕											
	GRIP	10mm	⊕	◆	◆							◆		

◆\* Stocked in the UK | ⊕ Pendulum Test Value ≥36 (Shod foot) when tested to BS EN 16165:2021

# Regal

GROUP / BLA - PORCELAIN

	Standard	Requirement	Established Values
Length and Width	ISO 10545-2	±0.6% ~ ±2mm	Conforms
Thickness	ISO 10545-2	±5% ~ ±0.5mm	Conforms
Straightness	ISO 10545-2	±0.5% ~ ±1.5mm	Conforms
Flatness	ISO 10545-2	±0.5% ~ ±2.0mm	Conforms
Rectangularity	ISO 10545-2	±0.5% ~ ±2.0mm	Conforms
Water Absorption	ISO 10545-3	$E_b \leq 0.5\%$	$E_b \leq 0.3\%$
Breaking Strength	ISO 10545-4	$\geq 1300N$	$\geq 1300N$
Modulus of Rupture	ISO 10545-4	Ave Minimum 35 N/mm <sup>2</sup>	Ave Minimum 45 N/mm <sup>2</sup>
Resistance to deep abrasion (unglazed tiles)	ISO 10545-6	$\leq 175mm^2$	$\leq 123mm^2$
Thermal Shock Resistance	ISO 10545-9	Pass according to EN ISO 10545-1	Resistant
Frost Resistance	ISO 10545-12	Pass according to EN ISO 10545-1	Resistant
Resistance to household chemicals and swimming pool salts	ISO 10545-13	Min Class UB	UA
Resistance to high concentrations of alkalis and acids	ISO 10545-13	Declare Value	UHA
Resistance to low concentrations of alkalis and acids	ISO 10545-13	Declare Value	Ula
Resistance to Stain	ISO 10545-14	Declare Value	Class 4
Reaction to Fire		Class A1 A1/FL	Class A1 A1/FL

Slip Resistance Characteristics	Pendulum Dry (4S Slider 96) +36	Pendulum Wet (4S Slider 96) +36
Regal Matt	✓	✓
Regal Grip	✓	✓
Regal Polished	✓	×
Regal Polished Mosaic	✓	×
Regal Matt Mosaic	✓	✓

Recycled Content	5 %
Range Name	Regal

The colour representations shown in this data sheet are as accurate as the limitations of the printing process will allow. Due to the manufacturing process of our floor tiles there may be a small variation in the PTV value. The slip resistance values are correct at the time of testing and represent the standard production value. Inadequate cleaning and maintenance will lead to significant reduction in the slip resistance of any tiles. The pendulum test results have been displayed in line with H&S Executive guidelines whereby 0-24 represents high slip potential, 25-35 moderate slip potential & 36+ represents a low slip potential.

For further information contact: T: 0116 276 2532 – W: [www.parkside.co.uk](http://www.parkside.co.uk) – E: [info@parkside.co.uk](mailto:info@parkside.co.uk)

Strata Technical Tiles is the partner brand of Parkside Architectural Tiles