

# Buk

5 COLOURS / 8 SIZES / 2 FINISHES / **VARIOUS** SPECIAL PIECES

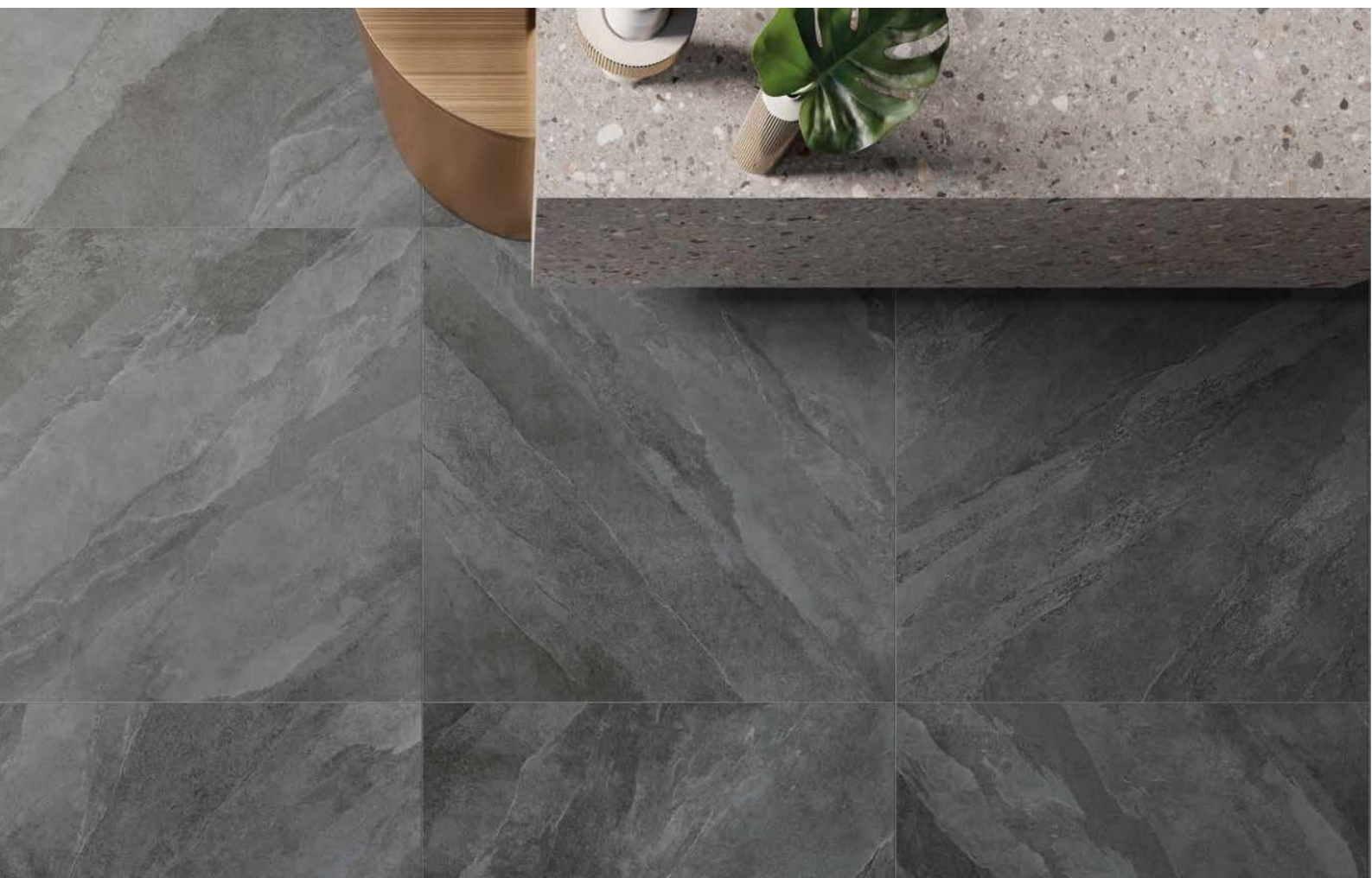
Buk shows a slate-like appeal following the directions and shades of the stone veins. The graphic reproduces natural splits and deep textures, revealing a subtle metallic sheen. Available in 8 formats ranging from 9.7x60cm up to 120x120cm, including 20mm tiles, Buk is an all-encompassing range suitable for any space.



Buk



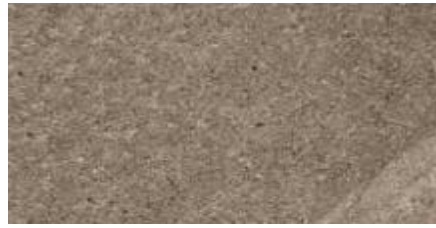
Buk



# Buk



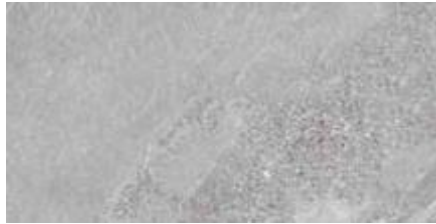
Anthracite



Walnut



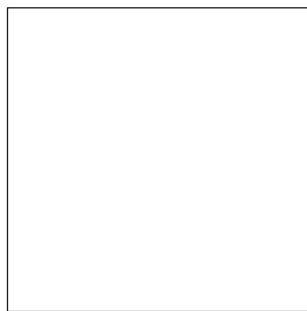
Greige



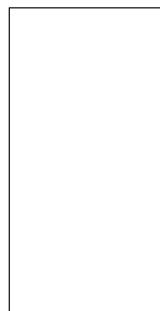
Grey



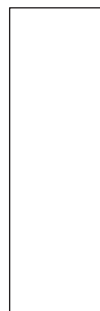
Ivory



1200x1200x9



600x1200x9  
600x1200x20



300x1200x9



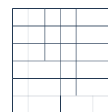
600x600x9  
600x600x20



300x600x9



97x600x9



Square Mosaic  
300x300x9

Porcelain	9mm thick		20mm thick	Wall/floor	Interior/exterior
	Matt	Grip	Grip	All tiles	All tiles
1200x1200	✓			Wall & Floor	Interior & Exterior
600x1200	✓		✓	Wall & Floor	Interior & Exterior
300x1200	✓			Wall & Floor	Interior & Exterior
600x600	✓		✓	Wall & Floor	Interior & Exterior
300x600	✓	✓		Wall & Floor	Interior & Exterior
97x600	✓			Wall & Floor	Interior & Exterior
300x300 Square Mosaic	✓			Wall & Floor	Interior & Exterior

The colour representations shown in this data sheet are as accurate as the limitations of the printing process will allow. Due to the manufacturing process of our floor tiles there may be a small variation in the PTV value. The slip resistance values are correct at the time of testing and represent the standard production value. Inadequate cleaning and maintenance will lead to significant reduction in the slip resistance of any tiles. The pendulum test results have been displayed in line with H&S Executive guidelines whereby 0-24 represents high slip potential, 25-35 moderate slip potential & 36+ represents a low slip potential.

For further information contact: T: 0116 276 2532 – W: [www.parkside.co.uk](http://www.parkside.co.uk) – E: [info@parkside.co.uk](mailto:info@parkside.co.uk)

Strata Technical Tiles is the partner brand of Parkside Architectural Tiles



# Buk

## GROUP / BLA - PORCELAIN

	Standard	Requirement	Established Values
Length and Width	ISO 10545-2	±0.6% ~ ±2mm	Conforms
Thickness	ISO 10545-2	±5% ~ ±0.5mm	Conforms
Straightness	ISO 10545-2	±0.5% ~ ±1.5mm	Conforms
Flatness	ISO 10545-2	±0.5% ~ ±2.0mm	Conforms
Rectangularity	ISO 10545-2	±0.5% ~ ±2.0mm	Conforms
Water Absorption	ISO 10545-3	$E_b \leq 0.5\%$	$E_b \leq 0.5\%$
Breaking Strength	ISO 10545-4	$\geq 1300N$	$\geq 1300N$
Modulus of Rupture	ISO 10545-4	Ave Minimum 35 N/mm <sup>2</sup>	Ave Minimum 35 N/mm <sup>2</sup>
Resistance to deep abrasion (unglazed tiles)	ISO 10545-6	$\leq 175mm^2$	$\leq 150mm^2$
Thermal Shock Resistance	ISO 10545-9	Pass according to EN ISO 10545-1	Resistant
Frost Resistance	ISO 10545-12	Pass according to EN ISO 10545-1	Resistant
Resistance to household chemicals and swimming pool salts	ISO 10545-13	Min Class UB	UA
Resistance to high concentrations of alkalis and acids	ISO 10545-13	Declare Value	UHA
Resistance to low concentrations of alkalis and acids	ISO 10545-13	Declare Value	ULA
Resistance to Stain	ISO 10545-14	Declare Value	Class 5
Reaction to Fire		Class A1 A1/FL	Class A1 A1/FL

Slip Resistance Characteristics	Pendulum Dry (4S Slider 96) +36	Pendulum Wet (4S Slider 96) +36
Full Range	✓	✓

Recycled Content	0 %
Range Name	Buk

The colour representations shown in this data sheet are as accurate as the limitations of the printing process will allow. Due to the manufacturing process of our floor tiles there may be a small variation in the PTV value. The slip resistance values are correct at the time of testing and represent the standard production value. Inadequate cleaning and maintenance will lead to significant reduction in the slip resistance of any tiles. The pendulum test results have been displayed in line with H&S Executive guidelines whereby 0-24 represents high slip potential, 25-35 moderate slip potential & 36+ represents a low slip potential.

For further information contact: T: 0116 276 2532 – W: [www.parkside.co.uk](http://www.parkside.co.uk) – E: [info@parkside.co.uk](mailto:info@parkside.co.uk)

Strata Technical Tiles is the partner brand of Parkside Architectural Tiles