

# MASLIC

6 COLOURS / 4 SIZES / 1 FINISHES / 0 SPECIAL PIECES

The Maslic range comprises of two concrete inspired tile designs; Minimal and Tecnic and three designs inspired by cementitious terrazzo; Classic, Rock and Pop.



# MASLIC

## Group | Bla – Porcelain

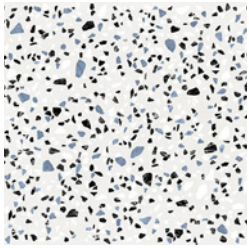
	Standard	Requirements	Established Values
Length & Width	ISO 10545-2	±0.6% ~ ±2mm	Conforms
Thickness	ISO 10545-2	±5% ~ ±0.5mm	Conforms
Straightness	ISO 10545-2	±0.5% ~ ±1.5mm	Conforms
Flatness	ISO 10545-2	±0.5% ~ ±2.0mm	Conforms
Rectangularity	ISO 10545-2	±0.5% ~ ±2.0mm	Conforms
Water absorption	ISO 10545-3	Eb ≤ 0.5%	≤ 0.5%
Breaking strength	ISO 10545-4	≥ 1300N	Ave ≥ 2000N
Modulus of rupture	ISO 10545-4	Ave Minimum 35 N/mm <sup>2</sup>	Ave Minimum 45 N/mm <sup>2</sup>
Resistance to deep abrasion (unglazed tiles)	ISO 10545-6	< 175mm <sup>3</sup>	Ave 150mm <sup>3</sup>
Thermal shock resistance	ISO 10545-9	Pass according to EN ISO 10545-1	Resistant
Frost Resistance	ISO 10545-12	Pass according to EN ISO 10545-1	Resistant
Resistance to household chemicals and swimming pool salts	ISO 10545-13	Min Class UB	UA
Resistance to high concentrations of alkalis and acids	ISO 10545-13	Declare Value	UHA
Resistance to low concentrations of alkalis and acids	ISO 10545-13	Declare Value	ULA
Resistance to Stain	ISO 10545-14	Declare Value	Class 5
Reaction to Fire	-	Class A1 A1/FL	A1 A1/FL

The colour representations shown in this data sheet are as accurate as the limitations of the printing process will allow. Due to the manufacturing process of our floor tiles there may be a small variation in the PTV value. The slip resistance values are correct at the time of testing and represent the standard production value. Inadequate cleaning and maintenance will lead to significant reduction in the slip resistance of any tiles. The pendulum test results have been displayed in line with H&S Executive guidelines whereby 0-24 represents high slip potential, 25-35 moderate slip potential & 36+ represents a low slip potential

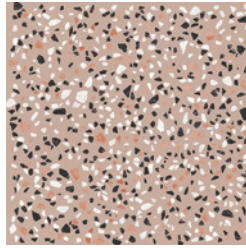
For further information contact: T: 0116 276 2532 – W: [www.parkside.co.uk](http://www.parkside.co.uk) – E: [info@parkside.co.uk](mailto:info@parkside.co.uk)

**Strata Technical Tiles is the partner brand of Parkside Architectural Tiles**

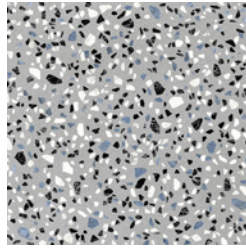
# MASLIC



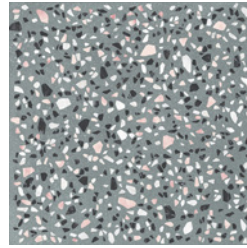
CLASSIC WHITE



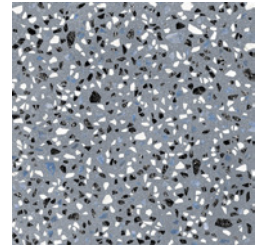
CLASSIC PINK



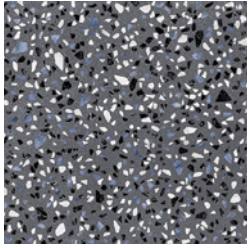
CLASSIC GREY



CLASSIC GREEN



CLASSIC BLUE



CLASSIC DARK GREY



MINIMAL WHITE



MINIMAL PINK



MINIMAL GREEN



MINIMAL BLUE



MINIMAL DARK GREY



MINIMAL TECHNIC WHITE



MINIMAL TECHNIC PINK



MINIMAL TECHNIC GREY



MINIMAL TECHNIC GREEN



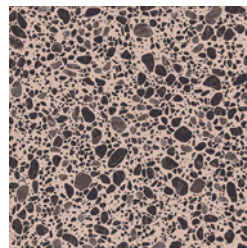
MINIMAL TECHNIC BLUE



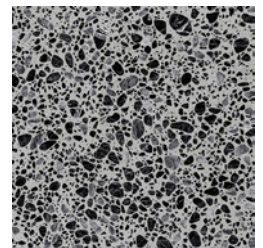
MINIMAL TECHNIC DK GREY



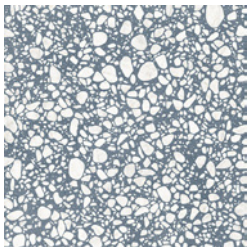
POP WHITE



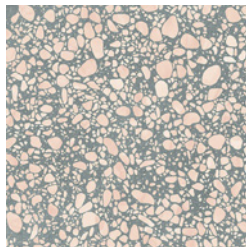
POP PINK



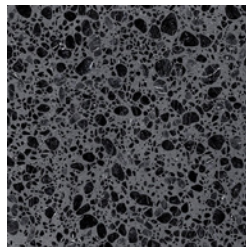
POP GREY



POP BLUE



POP WHITEGREEN



POP DARK GREY

The colour representations shown in this data sheet are as accurate as the limitations of the printing process will allow. Due to the manufacturing process of our floor tiles there may be a small variation in the PTV value. The slip resistance values are correct at the time of testing and represent the standard production value. Inadequate cleaning and maintenance will lead to significant reduction in the slip resistance of any tiles. The pendulum test results have been displayed in line with H&S Executive guidelines whereby 0-24 represents high slip potential, 25-35 moderate slip potential & 36+ represents a low slip potential

For further information contact: T: 0116 276 2532 – W: [www.parkside.co.uk](http://www.parkside.co.uk) – E: [info@parkside.co.uk](mailto:info@parkside.co.uk)

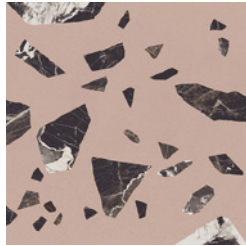
**Strata Technical Tiles is the partner brand of Parkside Architectural Tiles**



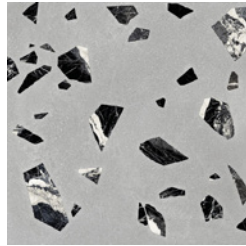
# MASLIC



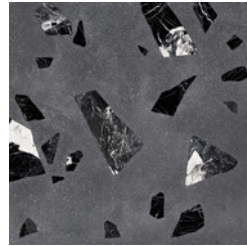
ROCK WHITE



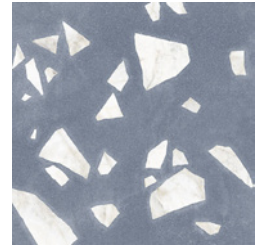
ROCK PINK



ROCK GREY



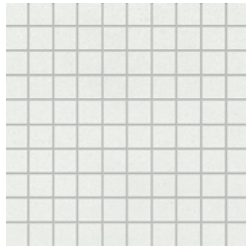
ROCK DARK GREY



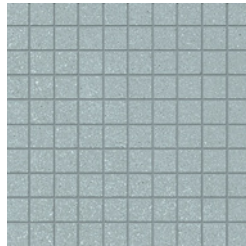
ROCK BLUE



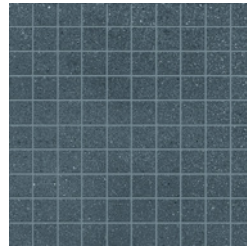
ROCK GREEN



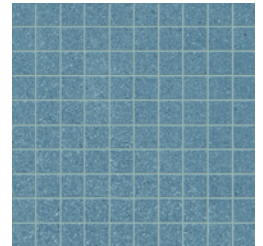
MINIMAL WHITE MOSAIC



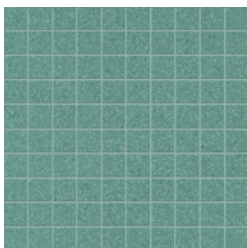
MINIMAL GREY MOSAIC



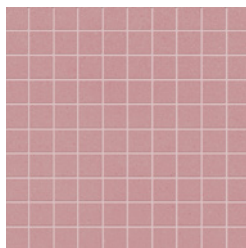
MINIMAL DK GREY MOSAIC



MINIMAL BLUE MOSAIC



MINIMAL GREEN MOSAIC



MINIMAL PINK MOSAIC

The colour representations shown in this data sheet are as accurate as the limitations of the printing process will allow. Due to the manufacturing process of our floor tiles there may be a small variation in the PTV value. The slip resistance values are correct at the time of testing and represent the standard production value. Inadequate cleaning and maintenance will lead to significant reduction in the slip resistance of any tiles. The pendulum test results have been displayed in line with H&S Executive guidelines whereby 0-24 represents high slip potential, 25-35 moderate slip potential & 36+ represents a low slip potential

For further information contact: T: 0116 276 2532 – W: [www.parkside.co.uk](http://www.parkside.co.uk) – E: [info@parkside.co.uk](mailto:info@parkside.co.uk)

**Strata Technical Tiles is the partner brand of Parkside Architectural Tiles**