

GRANITEK SAFE

Terrazzo Effect Tiles

17 COLOURS / 6 SIZES / 3 FINISHES / 1 SPECIAL PIECES

Over the centuries, the Venetian terrazzo tile has earned a reputation as one of the most original craft creations of the Italian school, bringing prestige to villas and palazzos with extraordinary beauty in Italy's Veneto region. This collection reworks a noble tradition from a contemporary angle with multiple colours, chip sizes and finishes.



Porcelain	10mm Thick			Wall/Floor	Interior/ Exterior
	Matt	Polished	Structured	All Tiles	All Tiles
1200x1200	✓	✓		Wall and floor	Interior & exterior
750x1500	✓	✓		Wall and floor	Interior & exterior
600x1200	✓	✓	✓	Wall and floor	Interior & exterior
750x750	✓	✓	✓	Wall and floor	Interior & exterior
600x600	✓	✓	✓	Wall and floor	Interior & exterior
200x200		✓		Wall and floor	Interior & exterior

GRANITEK SAFE

Terrazzo Effect Tiles

Group | Bla – Porcelain

Palladio

	Standard	Requirements	Established Values
Length & Width	ISO 10545-2	±0.6% ~ ±2mm	Conforms
Thickness	ISO 10545-2	±5% ~ ±0.5mm	Conforms
Straightness	ISO 10545-2	±0.5% ~ ±1.5mm	Conforms
Flatness	ISO 10545-2	±0.5% ~ ±2.0mm	Conforms
Rectangularity	ISO 10545-2	±0.5% ~ ±2.0mm	Conforms
Water absorption	ISO 10545-3	Eb ≤ 0.5%	Ave ≤ 0.06%
Breaking strength	ISO 10545-4	≥ 700N (for thickness < 7,5mm) ≥ 1300N (for thickness ≥ 7,5mm)	Ave ≥ 700N Ave 2500N
Modulus of rupture	ISO 10545-4	Ave Minimum 35 N/mm ²	Ave 142mm ³
Resistance to deep abrasion (unglazed tiles)	ISO 10545-6	< 175mm ³	Resistant
Thermal shock resistance	ISO 10545-9	Pass according to EN ISO 10545-1	Resistant
Frost Resistance	ISO 10545-12	Pass according to EN ISO 10545-1	UB
Resistance to household chemicals and swimming pool salts	ISO 10545-13	Min Class UB	NPD
Resistance to high concentrations of alkalis and acids	ISO 10545-13	Declare Value	NPD
Resistance to low concentrations of alkalis and acids	ISO 10545-13	Declare Value	Class 5
Resistance to Stain	ISO 10545-14	Declare Value	A1 A1/FL
Reaction to Fire	-	Class A1 A1/FL	A1 A1/FL

The colour representations shown in this data sheet are as accurate as the limitations of the printing process will allow. Due to the manufacturing process of our floor tiles there may be a small variation in the PTV value. The slip resistance values are correct at the time of testing and represent the standard production value. Inadequate cleaning and maintenance will lead to significant reduction in the slip resistance of any tiles. The pendulum test results have been displayed in line with H&S Executive guidelines whereby 0-24 represents high slip potential, 25-35 moderate slip potential & 36+ represents a low slip potential

For further information contact: T: 0116 276 2532 – W: www.parkside.co.uk – E: info@parkside.co.uk

Strata Technical Tiles is the partner brand of Parkside Architectural Tiles

GRANITEK SAFE

Terrazzo Effect Tiles

Group | Bla – Porcelain

Rialto

	Standard	Requirements	Established Values
Length & Width	ISO 10545-2	±0.6% ~ ±2mm	Conforms
Thickness	ISO 10545-2	±5% ~ ±0.5mm	Conforms
Straightness	ISO 10545-2	±0.5% ~ ±1.5mm	Conforms
Flatness	ISO 10545-2	±0.5% ~ ±2.0mm	Conforms
Rectangularity	ISO 10545-2	±0.5% ~ ±2.0mm	Conforms
Water absorption	ISO 10545-3	Eb ≤ 0.5%	Ave ≤ 0.06%
Breaking strength	ISO 10545-4	≥ 700N (for thickness < 7,5mm) ≥ 1300N (for thickness ≥ 7,5mm)	Ave ≥ 700N Ave 2500N
Modulus of rupture	ISO 10545-4	Ave Minimum 35 N/mm ²	Ave 142mm ³
Resistance to deep abrasion (unglazed tiles)	ISO 10545-6	< 175mm ³	Resistant
Thermal shock resistance	ISO 10545-9	Pass according to EN ISO 10545-1	Resistant
Frost Resistance	ISO 10545-12	Pass according to EN ISO 10545-1	UB
Resistance to household chemicals and swimming pool salts	ISO 10545-13	Min Class UB	NPD
Resistance to high concentrations of alkalis and acids	ISO 10545-13	Declare Value	NPD
Resistance to low concentrations of alkalis and acids	ISO 10545-13	Declare Value	Class 5
Resistance to Stain	ISO 10545-14	Declare Value	A1 A1/FL
Reaction to Fire	-	Class A1 A1/FL	A1 A1/FL
Slip Resistance Characteristics	Pendulum Dry (4S Slider 96) +36 PTV	Pendulum Wet (4S Slider 96) +36 PTV	
Structured Finish	✓	✓	

The colour representations shown in this data sheet are as accurate as the limitations of the printing process will allow. Due to the manufacturing process of our floor tiles there may be a small variation in the PTV value. The slip resistance values are correct at the time of testing and represent the standard production value. Inadequate cleaning and maintenance will lead to significant reduction in the slip resistance of any tiles. The pendulum test results have been displayed in line with H&S Executive guidelines whereby 0-24 represents high slip potential, 25-35 moderate slip potential & 36+ represents a low slip potential

For further information contact: T: 0116 276 2532 – W: www.parkside.co.uk – E: info@parkside.co.uk

Strata Technical Tiles is the partner brand of Parkside Architectural Tiles

GRANITEK SAFE

Terrazzo Effect Tiles



CERTOSA



CHIERICATI



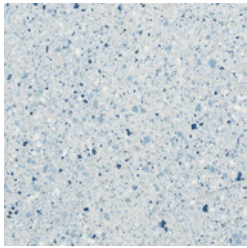
CORNARO



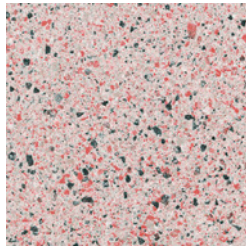
FOSCARI



PISANI



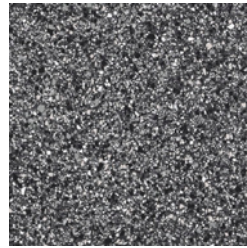
RIALTO BLUE



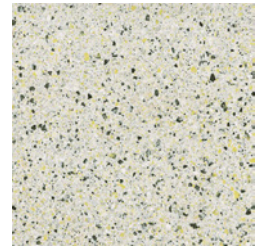
RIALTO CORAL



RIALTO EARTH



RIALTO GRAPHITE



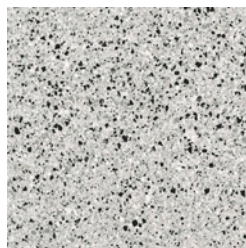
RIALTO GREEN



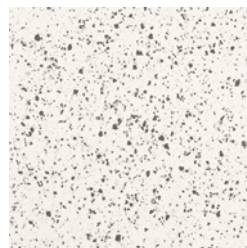
RIALTO IVORY



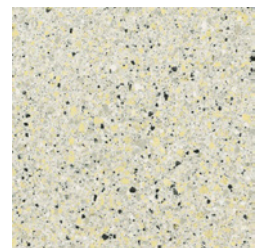
RIALTO PINK



RIALTO SILVER



RIALTO WHITE



RIALTO YELLOW



RIALTO ZINC



VALMARANA

The colour representations shown in this data sheet are as accurate as the limitations of the printing process will allow. Due to the manufacturing process of our floor tiles there may be a small variation in the PTV value. The slip resistance values are correct at the time of testing and represent the standard production value. Inadequate cleaning and maintenance will lead to significant reduction in the slip resistance of any tiles. The pendulum test results have been displayed in line with H&S Executive guidelines whereby 0-24 represents high slip potential, 25-35 moderate slip potential & 36+ represents a low slip potential

For further information contact: T: 0116 276 2532 – W: www.parkside.co.uk – E: info@parkside.co.uk

Strata Technical Tiles is the partner brand of Parkside Architectural Tiles