

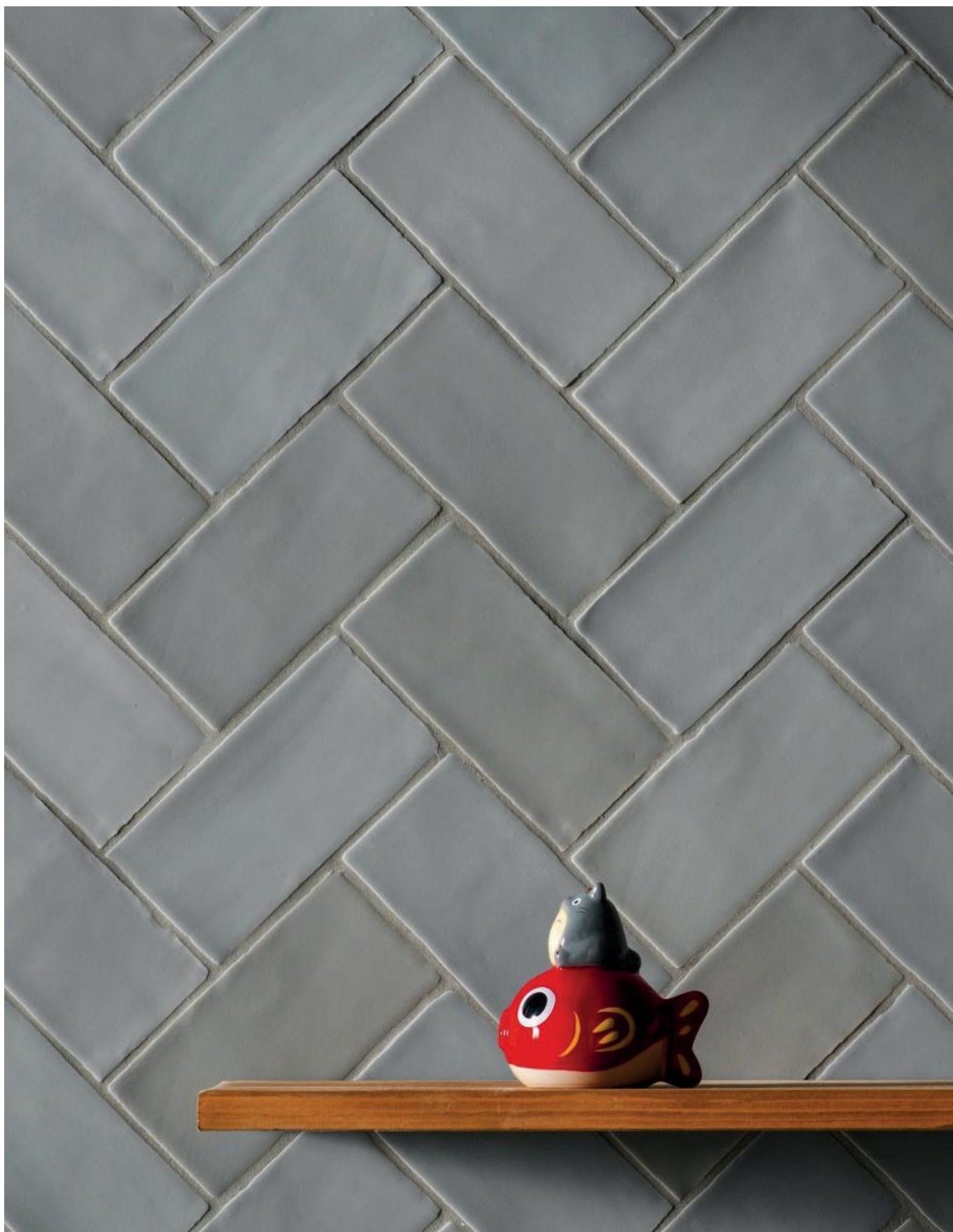
Carlow Wall

3 COLOURS / 1 SIZES / 2 FINISHES / 0 SPECIAL PIECES

With its variation of subtle shades within each colourway, Carlow Wall is available in 3 colours and a matt or glossy finish. Match it up with Carlow Floor. This range contains 0% recycled content.



Carlow Wall



Carlow Wall



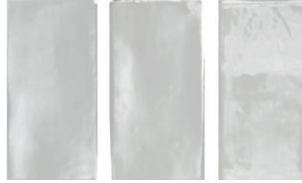
WHITE MATT



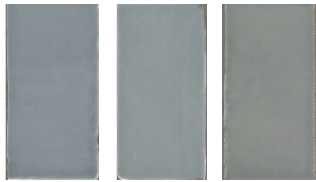
WHITE GLOSS



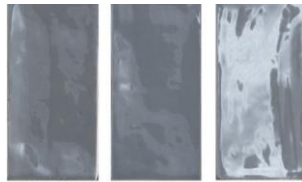
GREY MATT



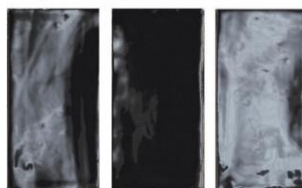
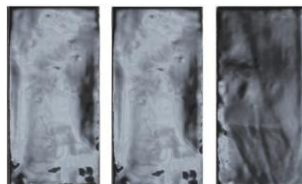
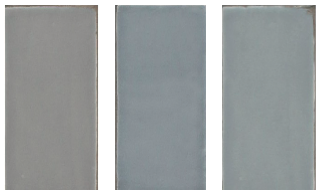
GREY GLOSS



BLACK MATT



BLACK GLOSS



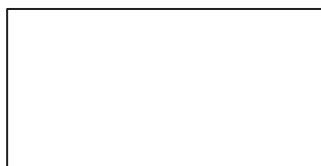
| | | | |
|-----------|------------|------------|-----------|
| Porcelain | 10mm thick | Wall/floor | |
| | Gloss | Matt | All tiles |
| 75x150 | ✓ | ✓ | Wall |

The colour representations shown in this data sheet are as accurate as the limitations of the printing process will allow. Due to the manufacturing process of our floor tiles there may be a small variation in the PTV value. The slip resistance values are correct at the time of testing and represent the standard production value. Inadequate cleaning and maintenance will lead to significant reduction in the slip resistance of any tiles. The pendulum test results have been displayed in line with H&S Executive guidelines whereby 0-24 represents high slip potential, 25-35 moderate slip potential & 36+ represents a low slip potential.

For further information contact: T: 0116 276 2532 – W: www.parkside.co.uk – E: info@parkside.co.uk

Strata Technical Tiles is the partner brand of Parkside Architectural Tiles

Carlow Wall



75X150

GROUP / BLA - PORCELAIN

| | Standard | Requirement | Established values |
|---|--------------|----------------------------------|--------------------------|
| Length and width | ISO 10545-2 | ±0.5% ~ ±2mm | Conforms |
| Thickness | ISO 10545-2 | ±10% ~ ±0.5mm | Conforms |
| Straightness | ISO 10545-2 | ±0.5% ~ ±1.5mm | Conforms |
| Flatness | ISO 10545-2 | ±0.5% ~ ±2.0mm | Conforms |
| Rectangularity | ISO 10545-2 | ±0.5% ~ ±2.0mm | Conforms |
| Water absorption | ISO 10545-3 | $E_v \leq 10\%$ | Ave >10% |
| Breaking strength | ISO 10545-4 | ≥ 600N | Ave ≥ 600N |
| Modulus of rupture | ISO 10545-4 | Ave min 12 N/mm ² | Ave 12 N/mm ² |
| Thermal shock resistance | ISO 10545-1 | Pass according to EN ISO 10545-1 | Resistant |
| Resistance to household chemicals and swimming pool salts | ISO 10545-13 | Min Class GB | GA |
| Resistance to high concentrations of alkalis and acids | ISO 10545-13 | Declare Value | GHB |
| Resistance to low concentrations of alkalis and acids | ISO 10545-13 | Declare Value | GLA |
| Resistance to stain | ISO 10545-14 | Declare Value | Class 4 |
| Reaction to fire | - | Class A1 A1/FL | A1 A1/FL |

| | |
|------------------|----|
| Recycled content | % |
| Carlow Wall | 70 |

The colour representations shown in this data sheet are as accurate as the limitations of the printing process will allow. Due to the manufacturing process of our floor tiles there may be a small variation in the PTV value. The slip resistance values are correct at the time of testing and represent the standard production value. Inadequate cleaning and maintenance will lead to significant reduction in the slip resistance of any tiles. The pendulum test results have been displayed in line with H&S Executive guidelines whereby 0-24 represents high slip potential, 25-35 moderate slip potential & 36+ represents a low slip potential.

For further information contact: T: 0116 276 2532 – W: www.parkside.co.uk – E: info@parkside.co.uk

Strata Technical Tiles is the partner brand of Parkside Architectural Tiles